



A multi drop Modbus RS485 interface for the Searchpoint Optima Plus and Searchline Excel infrared gas detection products

DVC100M Modbus interface module



Features

- Up to 32 detectors on single multi drop cable
- Detector status and configuration available at control room
- Warning/Fault diagnostics available at control room
- Local calibration/configuration
- 4-20mA output

Applications

- On and offshore oil and gas exploration and extraction
- Chemical and Petrochemical plants
- Oil and gas distribution and many other Industrial applications.

The DVC100M Modbus interface module provides a multi drop Modbus RS485 interface for the Searchpoint Optima Plus and Searchline Excel infrared gas detection products. The DVC100M also provides an interface for the handheld interrogator (SHC-1) to facilitate local calibration and configuration facilities of the detector.

The multi drop Modbus capability enables significant savings in installation and cabling costs. Additionally, the 2 way digital communication protocol allows configuration and fault diagnosis information to be communicated back to the control room. This further reduces servicing and maintenance costs as the operator can diagnose the state of any individual unit before deciding to send anyone into the field.



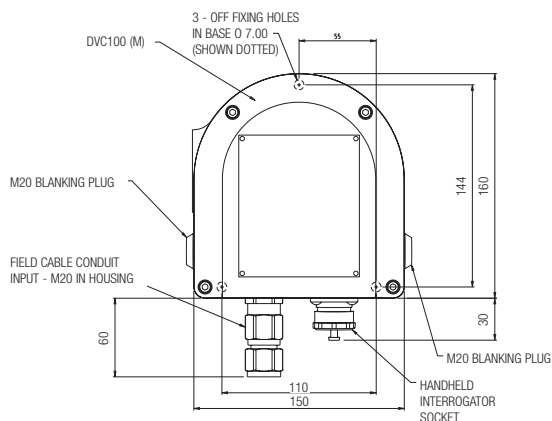
General specification



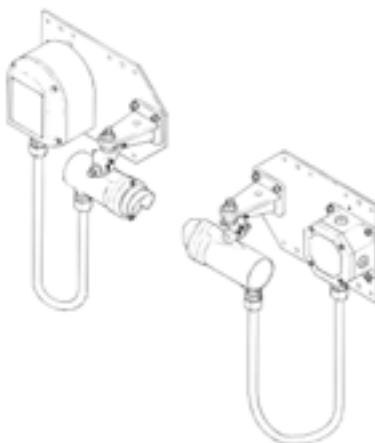
General Specification

Electrical	Supply Voltage:	18V to 32V
	Power Consumption (Module only):	< 1.5W
Communications	Modbus Interface (Electrical):	Isolated Multidrop RS485 Transceiver
	Maximum Number of Units on RS485 Network:	32
Communications	Communications Protocol:	Modbus RTU
	Programmable Addresses:	0-98 (99 Default address) Address programmed via PC or SHC-1
Communications	Data Rate:	9,600 baud
	Time to Commence Responding to Request:	<= 0.1 mS
Communications	Compatible Detectors:	Searchline Excel Searchline Excel Duct Mount Searchpoint Optima Plus
	SHC-1 Handheld Connection:	IS protected, 3 pin socket
Environmental	Operational Temperature Range:	-40°C to +65°C (-40°F to +149°F)
	Enclosure Entries:	1xM25, 3xM20
Environmental	Enclosure Material:	DMC reinforced Polyester
	Weight:	2.1kg (4.6lbs)
Environmental	Ingress Protection (Inside DVC100M):	IP67
	EMC Compliance:	EN50270 (1999)
Certification	ATEX:	Ex II 2G EEx e m ia IIC T5
		(-40°C to +65°C)

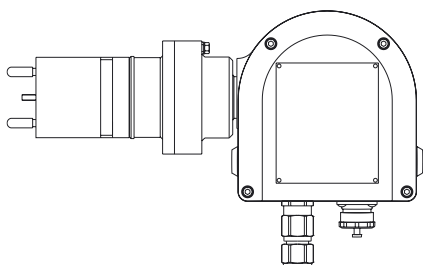
DVC100M Dimensions



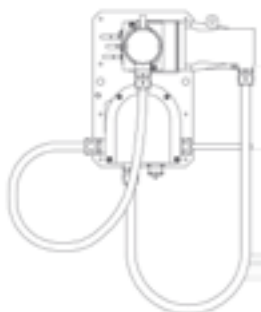
Searchline Excel/DVC100M



Searchline Optima Plus/DVC100M



Searchline Excel Cross-Duct/DVC100M



As World leaders in gas detection solutions, Honeywell Analytics' Sieger systems provide the most efficient, practical and cost-effective fixed-point equipment. Wherever protection is required from flammable or toxic gases, you can rely on our equipment to provide practical solutions and to help keep your business running safely and profitably.

The Sieger range of premium fixed gas detection



Apex

Typically used in the oil and gas distribution, petroleum extraction and chemical manufacturing industries, the Apex gas detector and transmitter functions across a wide range of detectable flammable and toxic gases. With its rugged 316 stainless steel enclosure, it is especially suited for extreme conditions, and provides a cost-effective gas detection solution for a wide range of applications.



Searchline Excel

Searchline Excel Cross Duct™ is an open path infrared gas detector for the detection of Hydrocarbons within HVAC air intakes and ventilation ducting systems up to 5 meters in width.

It is based on the proven Searchline Excel, which covers ranges up to 200m.

ClearShield™ glass coating, infrared beam and heated optical surfaces all combine to reduce downtime and increase system availability.



Searchpoint Optima Plus

Designed for use in potentially explosive atmospheres in harsh environmental conditions, SearchPoint Optima Plus is ideal where speed of response, reduced maintenance and failsafe operation is essential. Common applications include offshore platforms, production storage and offloading vessels, and oil and gas terminals.



Signalpoint

Signalpoint is a self-contained gas sensor system for either combustible or toxic gases, designed to make installation simple and maintenance minimal. Constructed in strong plastic, it is particularly suited for indoor applications in light industrial environments.



System 57

The System 57 controller provides display and alarm facilities for the full range of gas detectors. It comprises a rack unit with mounting options for channel control cards and interface cards.

Find out more

www.honeywellanalytics.com

Customer business centre

Europe and the rest of the world

Honeywell Analytics AG
Wilstrasse 11-U11
CH-8610 Uster
Switzerland
Tel: +41 (0)44 943 4300
Fax: +41 (0)44 943 4398
sales@zelana.co.uk

Customer business center

Americas

Honeywell Analytics Distribution, Inc.
400 Sawgrass Corporate Pkwy
Suite 100
Sunrise, FL 33325
USA
Tel: +1 954 514 2700
Toll free: +1 800 538 0363
Fax: +1 954 514 2784
sales@zelana.com

www.honeywell.com



Searchflame 16

Searchflame 16 is a range of optical flame detectors for detection of Hydrocarbon and non-Hydrocarbon flaming fires in designated hazardous areas. Operating on UV or UV/IR principles, they have a 120-degree field of view, providing the widest coverage available by any product.



705 HT Sensor

The 705 High Temperature Sensor is a hazardous area certified sensor for the detection of combustible gases.

Please Note:

While every effort has been made to ensure accuracy in this publication, no responsibility can be accepted for errors or omissions. Data may change, as well as legislation, and you are strongly advised to obtain copies of the most recently issued regulations, standards, and guidelines. This publication is not intended to form the basis of a contract.
© 2005 Honeywell Analytics

H_DVC100M Modbus_DS0306_V1
12/05
© 2005 Honeywell Analytics

Honeywell